

# Model 4001A Accelerometer



Silicone MEMS Accelerometer  
Signal Conditioned Output  
Temperature Calibrated  
Low Cost, Lightweight



The **Model 4001A** is an economical signal conditioned accelerometer with integral temperature compensation. The accelerometer incorporates a 3<sup>rd</sup> generation silicon MEMS sensor providing outstanding performance. The accelerometer is packaged in a rugged aluminum housing ideal for transportation and instrumentation testing. The model 4001A incorporates an integral 5-pin connector at the end of the cable assy.

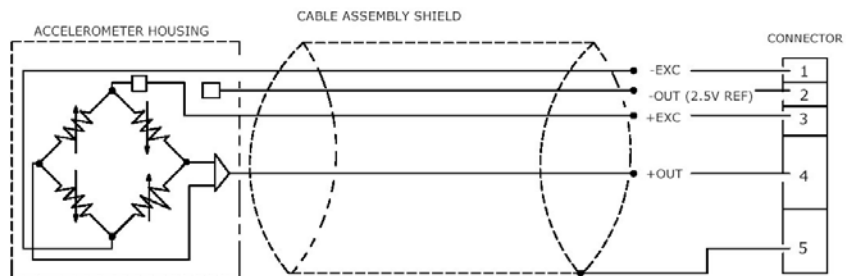
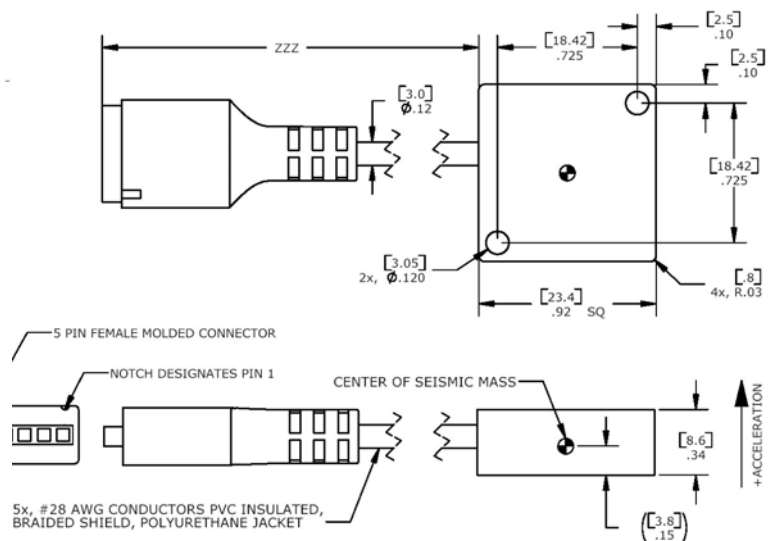
## FEATURES

- $\pm 2g$  to  $\pm 200g$  Dynamic Range
- High Over-Range Protection
- Signal Conditioned Output
- Low Power Consumption
- Integral Connector
- Gas Damping
- 8 to 36Vdc Excitation Voltage

## APPLICATIONS

- Low Frequency Monitoring
- Transportation
- Vibration Sensing
- Test & Instrumentation
- Machine Control
- Motion Analysis
- Tilt

## dimensions



# Model 4001A Accelerometer

## performance specifications

All values are typical at +24°C, 100Hz and 12Vdc excitation unless otherwise stated. Measurement Specialties reserves the right to update and change these specifications without notice.

### Parameters

	±2	±5	±10	±20	±50	±100	±200	Notes
<b>DYNAMIC</b>								
Range (g)	±2	±5	±10	±20	±50	±100	±200	
Sensitivity (mV/g)	1000	400	200	100	40	20	10	
Frequency Response (Hz)	0-200	0-300	0-350	0-600	0-800	0-1300	0-1500	±5%
Natural Frequency (Hz)	700	800	1000	1500	4000	6000	8000	
Non-Linearity (%FSO)	±0.5	±0.5	±0.5	±0.5	±0.5	±0.5	±0.5	
Transverse Sensitivity (%)	<3	<3	<3	<3	<3	<3	<3	<1 Typical
Damping Ratio	0.7	0.7	0.7	0.7	0.7	0.7	0.6	
Shock Limit (g)	5000	5000	5000	5000	5000	5000	5000	

### ELECTRICAL

Zero Acceleration Output (mV)	±100	±100	±100	±100	±100	±100	±100	Differential
Excitation Voltage (Vdc)	8 to 36	8 to 36	8 to 36	8 to 36	8 to 36	8 to 36	8 to 36	
Excitation Current (mA)	<5	<5	<5	<5	<5	<5	<5	
Bias Voltage (Vdc)	2.5	2.5	2.5	2.5	2.5	2.5	2.5	
Output Resistance (Ω)	<100	<100	<100	<100	<100	<100	<100	
Insulation Resistance (MΩ)	>100	>100	>100	>100	>100	>100	>100	@100Vdc
Turn On Time (msec)	<100	<100	<100	<100	<100	<100	<100	
Residual Noise (μV RMS)	500	300	300	350	400	350	400	Passband
Ground Isolation	Isolated from Mounting Surface							

### ENVIRONMENTAL

Thermal Zero Shift (%FSO/°C)	±0.014	±0.014	±0.014	±0.014	±0.014	±0.014	±0.014	Typical
Thermal Sensitivity Shift (%/°C)	±0.028	±0.028	±0.028	±0.028	±0.028	±0.028	±0.028	Typical
Operating Temperature (°C)	-20 to 85							
Compensated Temperature (°C)	-20 to 85							
Storage Temperature (°C)	-40 to 90							

### PHYSICAL

Case Material	Anodized Aluminum
Cable	PVC Insulated Leads, Braided Shield, PU Jacket
Weight (grams)	7
Mounting	2x #4 or M3 Screws
Mounting Torque	3 Lb-in (0.3 N-m)
AWG	#28

**Wiring color code:** +Excitation = Pin 3; -Excitation = Pin 1; +Output = Pin 4; -Output = Pin 2;

**Supplied accessories:** AC-D02295 Mating Pins

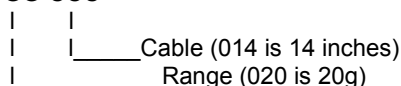
**Optional accessories:** AC-D02652 Triaxial Mounting Block  
101 Three Channel DC Signal Conditioner Amplifier

The information in this sheet has been carefully reviewed and is believed to be accurate; however, no responsibility is assumed for inaccuracies. Furthermore, this information does not convey to the purchaser of such devices any license under the patent rights to the manufacturer. Measurement Specialties, Inc. reserves the right to make changes without further notice to any product herein. Measurement Specialties, Inc. makes no warranty, representation or guarantee regarding the suitability of its product for any particular purpose, nor does Measurement Specialties, Inc. assume any liability arising out of the application or use of any product or circuit and specifically disclaims any and all liability, including without limitation consequential or incidental damages. Typical parameters can and do vary in different applications. All operating parameters must be validated for each customer application by customer's technical experts. Measurement Specialties, Inc. does not convey any license under its patent rights nor the rights of others.

## ordering info

PART NUMBERING Model Number+Range+Cable Length

4001A-GGG-CCC



Example: 4001A-020-014  
Model 4001A, 20G, 14" Cable