



Crash Facility Lighting Solutions

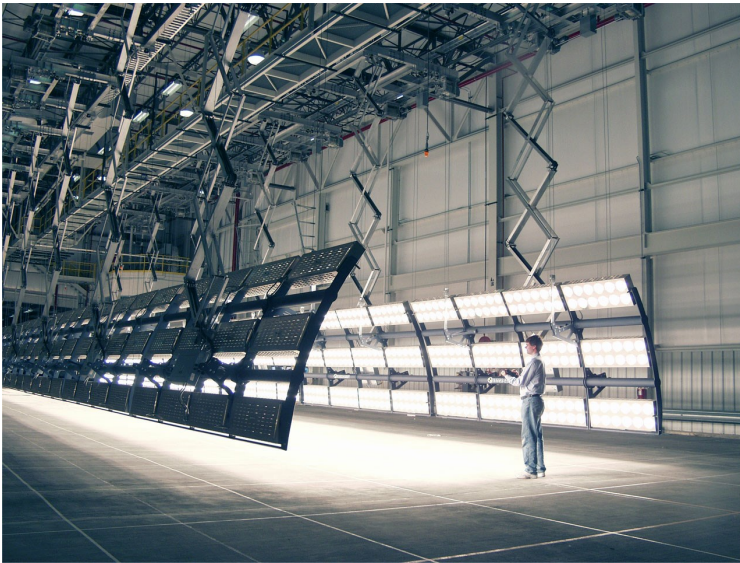
Quality lighting for sled and barrier systems

Whether it be HMI, LED, fluorescent or tungsten, Seattle Safety has the lighting solution to fit any customer's needs. As a manufacturer of crash systems since the mid 90's, Seattle Safety understands that each situation is unique and provides custom lights for custom needs.

HMI



Johnson Controls Burscheid



GM Proving Grounds

Tungsten (Par64)

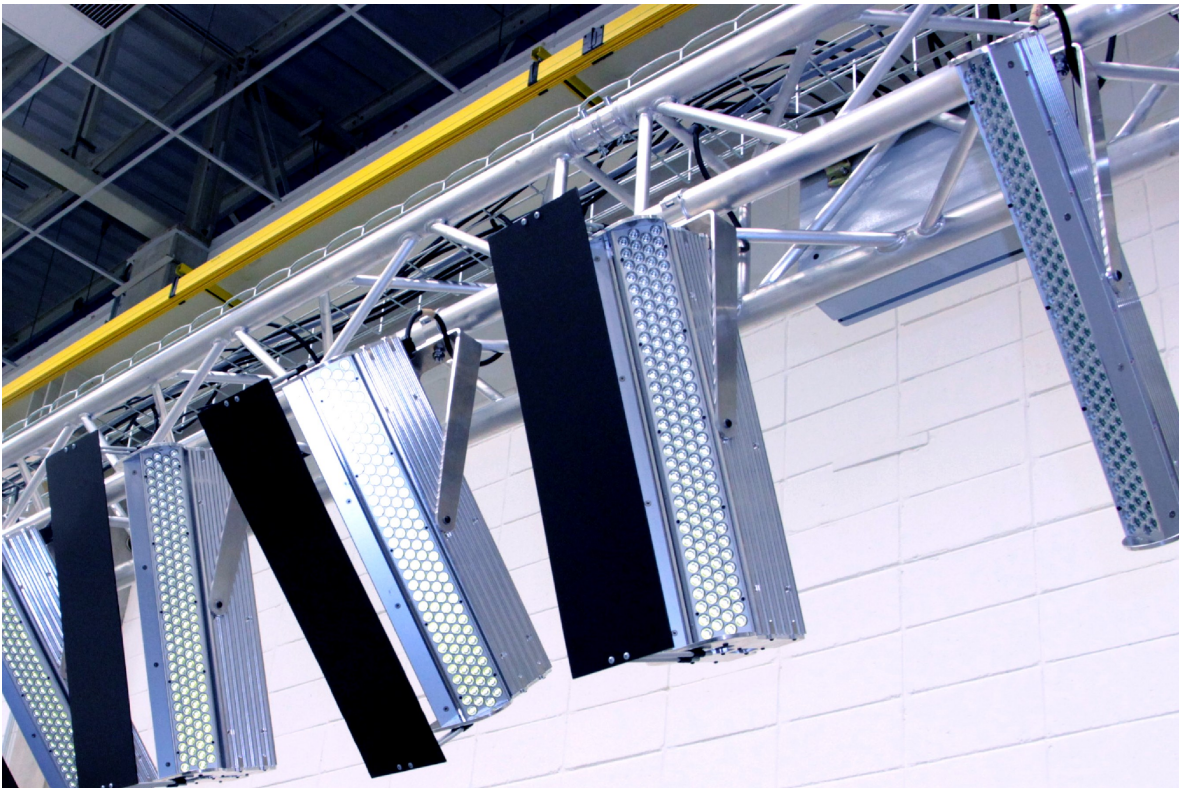


Johnson Controls Plymouth

Fluorescent



B/E Seating Products Group



Volkswagen Brazil



Safety testing solutions from the market leader

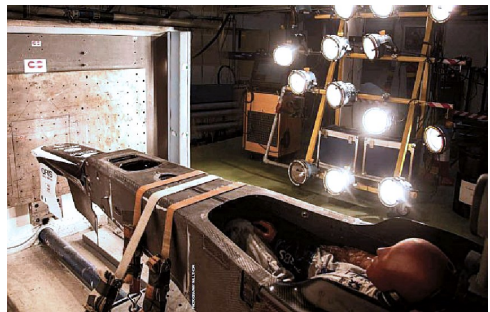
Seattle Safety leads the market in sled test systems offering the most advanced technology and a full spectrum of products and services. We've installed more than 60 systems for major manufacturers around the world. We're ready to support you with a complete system approach, ranging from expert systems integration and training to a broad line of test solutions.



Acceleration Sleds—For the highest productivity and optimal performance in the lab, ServoSled™ leads the market. Efficiently and accurately test everything from low-g whiplash to high payload crashes. Comply with the all of the latest FMVSS, ECE, and NCAP safety standards. The system's innovative technology offers a number of key advantages to help lab managers meet the demands of safety engineering.



Decelerator sleds—Reproduce a full spectrum of crash pulses with excellent accuracy and repeatability. Our pneumatically propelled sleds use wire bender or poly-tube decelerators to offer excellent pulse repeatability with a minimal investment.



Structural impactors—Leveraging Seattle Safety experience in Decelerator Sleds and Crash Test Barriers, our Structural Impactors provide a low-cost solution for performing destructive validation of critical structures.



Crash test barriers—For full-scale crash test labs, these proven systems provide all your barrier configurations from FMVSS full frontals to EuroNCAP offsets to IIHS small overlaps. We also offer wall-mounted barrier block fixtures for frontal and side-impact testing and ramps for curb trip and rollovers.



4502 B Street NW #1
Auburn Washington 98001
USA

Franz Krämer Strasse 5
82229 Seefeld
Germany

www.seattlesafety.com sales@seattlesafety.com

Any performance data contained herein is operating-condition dependent. Material is confidential and proprietary to Seattle Safety and is not to be disclosed or reproduced in whole or part without prior written agreement from Seattle Safety.