

M150

World's Smallest Stringpot

Ultra Miniature String Pot • Voltage Divider Output

1½-inch Stroke Range

Precision High-Cycle Potentiometer

Designed for Test and Space-Critical Applications



GENERAL

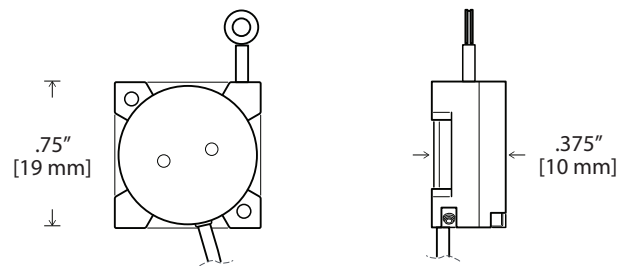
Full Stroke Range	0-1.5 inches
Output Signal Options	voltage divider (potentiometer)
Accuracy	± 1% full stroke
Resolution	essentially infinite
Sensitivity	897 – 924 mV/V full stroke
Measuring Cable	.014-inch dia. nylon-coated stainless steel
Measuring Cable Tension	4 oz. ±25%
Maximum Measuring Cable Acceleration	39 g
Enclosure Material	anodized aluminum
Sensor	conductive plastic precision potentiometer
Potentiometer Cycle Life	5 million cycles
Weight	0.5 oz. max.

ELECTRICAL

Input Resistance	5K ±10% ohms
Recommended Output Signal Current	< 1µA
Recommended Maximum Input Voltage	20 VDC

ENVIRONMENTAL

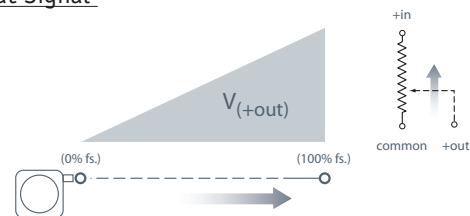
Enclosure	NEMA 12, IP 50
Operating Temperature	-40° to 185°F (-40° to 85°C)
Temp. Coefficient of Sensing Element	.0028%/°F (.005%/°C)
Vibration	up to 10 g at 30 – 2000 Hz max.



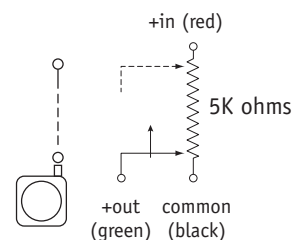
Introducing the world's smallest stringpot. The M150 is smaller than a thumbprint and occupies a tiny space of only .74 x .74 x .38 inches. With a full stroke measurement range of 1.5 inches, the M150 has been designed for many aerospace and automotive space-critical test applications such as throttle position and crash-test instrumentation.

The heart of the M150 is a precision high-cycle conductive plastic potentiometer that delivers a high-linearity voltage position feedback signal. With its rugged all aluminum construction, the M150 has been engineered for reliability and to provide quick, easy and hassle-free installation.

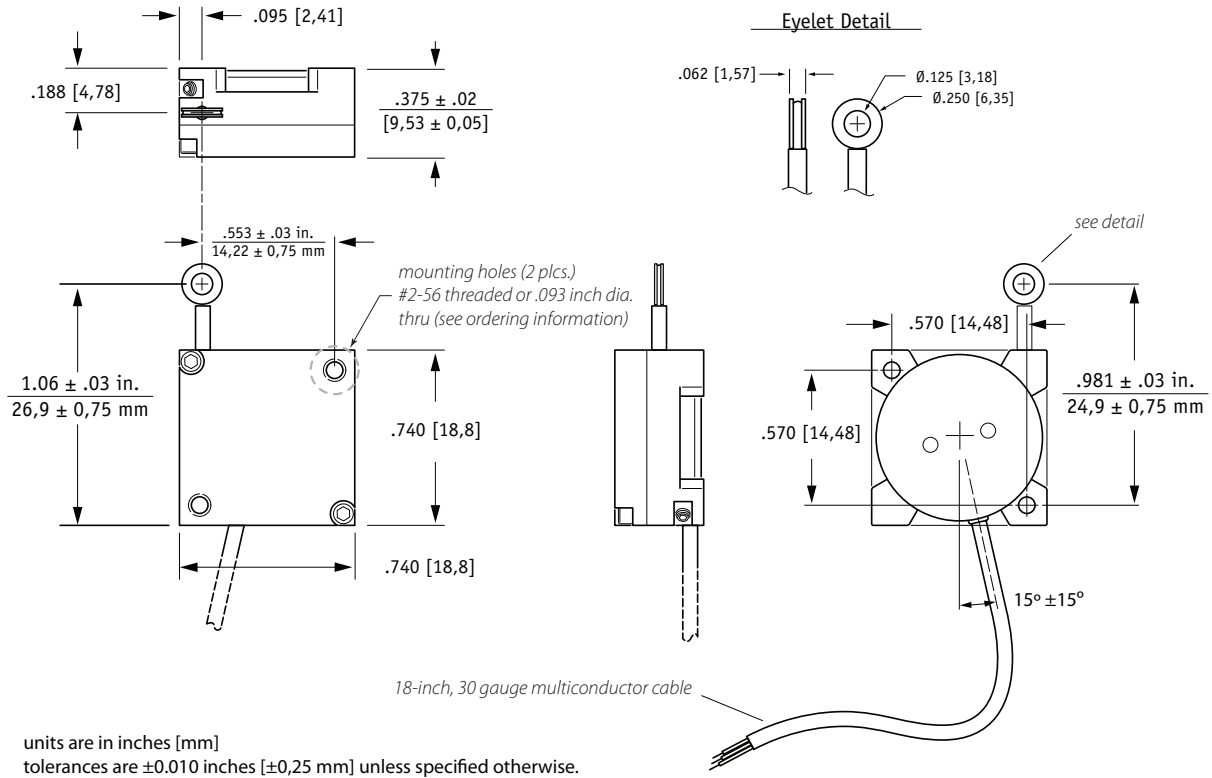
Output Signal



Electrical Connection



Outline Drawing:



Ordering Information

Model Number:

M150 - 4 - A - B - 5K - C1
order code:

Sample Model Number:

M150 - 4 - H1 - E - 5K - C1

- A** mounting hole style: .093 inch dia. thru
- B** measuring cable termination: eyelet

Mounting Hole Style:

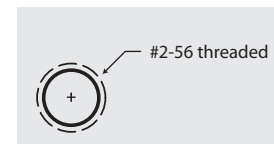
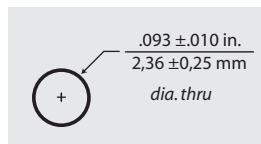
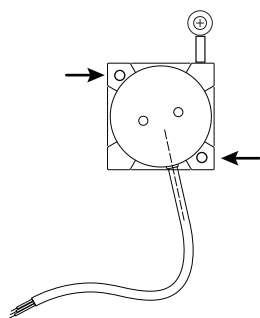
A *order code:*

H1

.093 thru

H2*

threaded



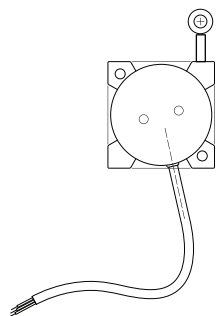
*-includes: 4) #2-56 x 3/8" pan head mounting screws with washers

Ordering Info (cont.):

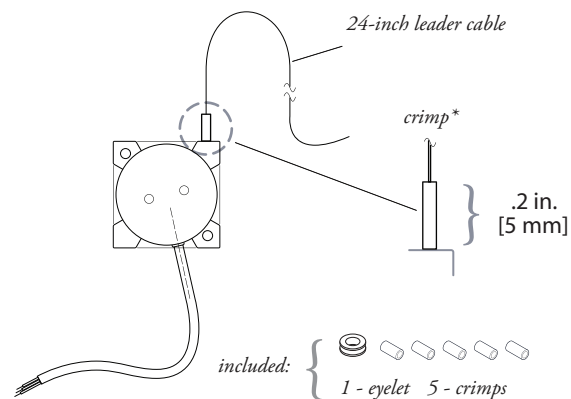
Measuring Cable Termination:

Ⓑ order code:

E
Eyelet



L
Leader Cable



*note: crimped stop prevents leader cable from retracting into sensor body



日本代理店
エフ・アイティー・パシフィック株式会社
〒111-0053
東京都台東区浅草橋3-20-15 浅草橋ミハマビル4F
Tel:03-5820-7021 Mail:asdummy@fitpacific.com

tel: 800.423.5483 • +1.818.701.2750 fax: +1.818.701.2799
meas-spec.com

version:3.0 last updated:May 22, 2013

measurement
SPECIALTIES™